

*Torex...Powerfully Small!*

**Voltage Regulators for consumer and industrial equipment**  
**Product Overview**

September 2023  
TOREX Semiconductor  
Rev. 1.1

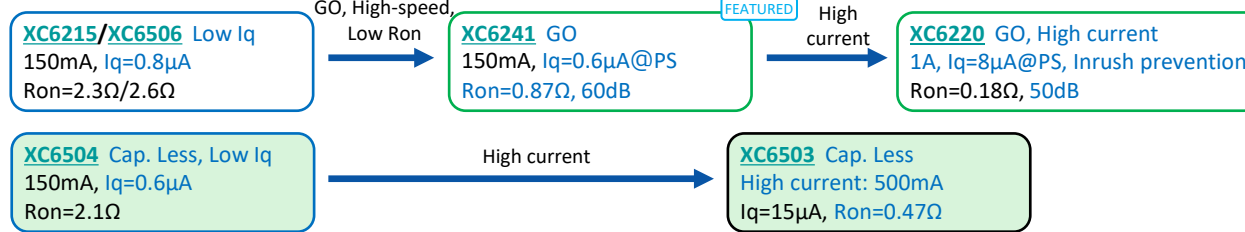
## ■ Features of TOREX Voltage Regulator

- Ultra-small : Wafer level and low-profile packages.
- Ultra-low Iq : Achieves long battery life.
- Various controls types : Green Operation (GO) type achieving both low Iq and high-speed response in addition to low Iq type and high-speed response type.

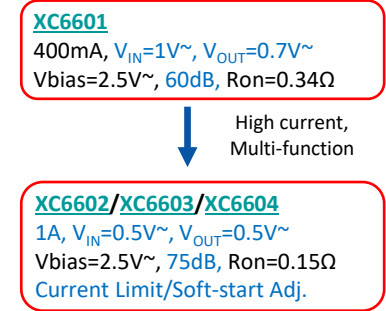
## ■ Typical Voltage Regulator



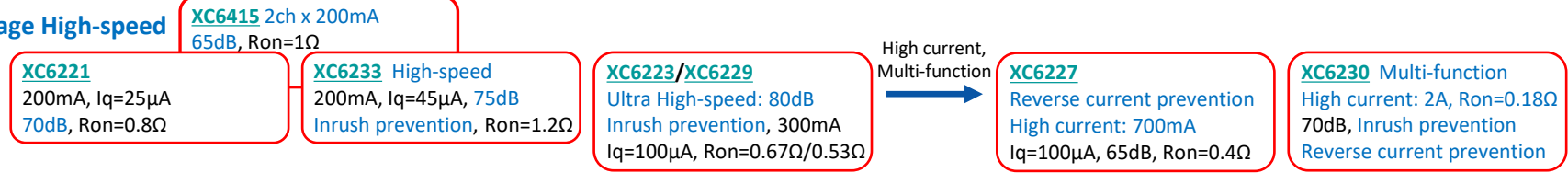
### ➤ Low voltage Low Iq



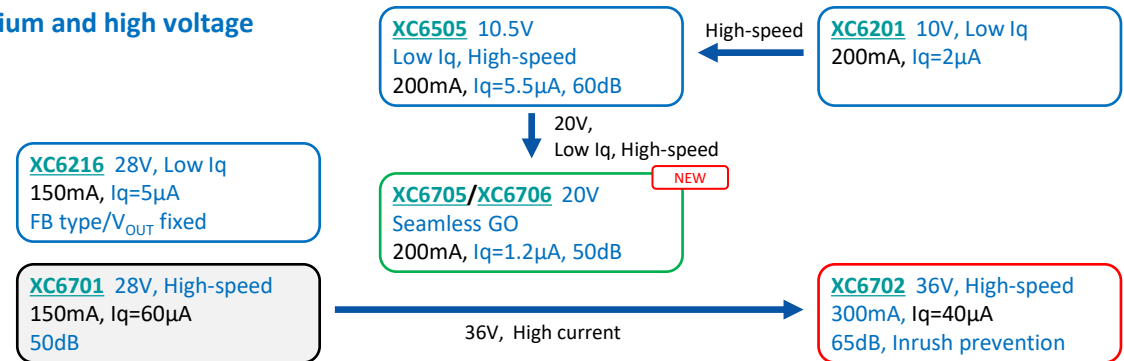
### ➤ For Low input voltage



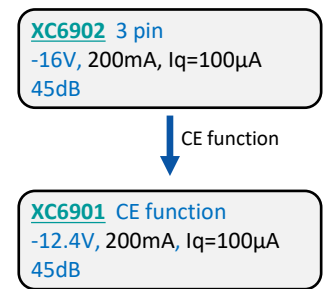
### ➤ Low voltage High-speed



### ➤ Medium and high voltage



### ➤ Negative Voltage

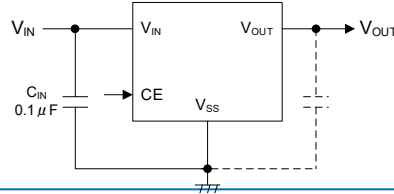
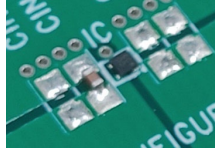


# Low Input Voltage Regulator : Featured Products

## ■ **XC6504** - Iq=0.6μA "No CL Cap", 150mA LDO

- Low Supply Current 0.6μA
- C<sub>L</sub> Capacitor-Less Compatible

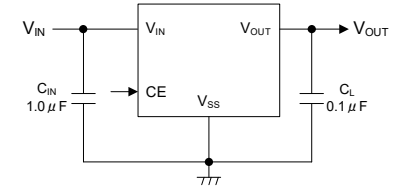
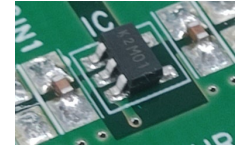
V <sub>IN</sub>	: 1.4V ~ 6.0V
V <sub>OUT</sub>	: 1.1V ~ 5.0V
I <sub>OUT</sub>	: 150mA
I <sub>q</sub>	: 0.6μA
PSRR	: 30dB @1kHz
Topr	: -40°C ~ 85°C
Package	: USPN-4B02, SSOT-24
	: SOT-25, USPQ-4B04



## ■ **XC6215** - 200mA Low Power LDO

- Low Supply Current 0.8μA

V <sub>IN</sub>	: 1.5V ~ 6.0V
V <sub>OUT</sub>	: 0.9V ~ 5.0V
I <sub>OUT</sub>	: 200mA
I <sub>q</sub>	: 0.8μA
PSRR	: 35dB @1kHz
Topr	: -40°C ~ 85°C
Package	: SOT-25, SSOT-24, USP-4
	: USPN-4, USP-6B06
	: USP-3 (3pin LDO)

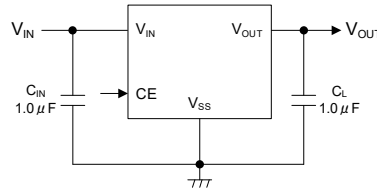
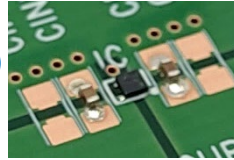


FEATURED

## ■ **XC6241** - 150mA LDO with Green Operation

- Green Operation Function (Low Supply Current & High Speed)
- Low Ron / 105°C operation

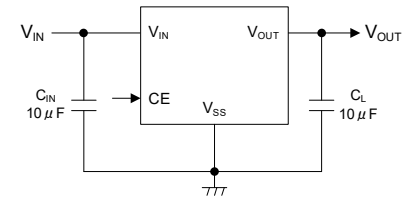
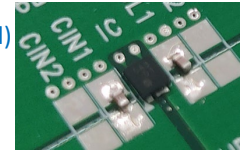
V <sub>IN</sub>	: 1.6V ~ 6.0V
V <sub>OUT</sub>	: 1.2V ~ 5.0V
I <sub>OUT</sub>	: 150mA
I <sub>q</sub>	: 0.6μA
R <sub>on</sub>	: 1.1Ω @3.3V
PSRR	: 60dB @1kHz
Topr	: -40°C ~ 105°C
Package	: USPQ-4B05, SSOT-24



## ■ **XC6220** - 1A High Speed, Low Noise, Ultra Low V-Drop "GO" LDO

- Green Operation Function (Low Supply Current & High Speed)

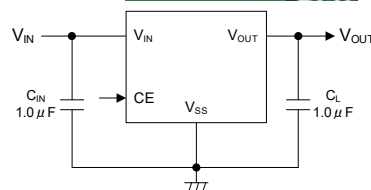
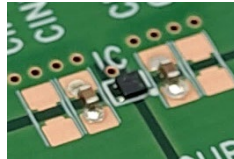
V <sub>IN</sub>	: 1.6V ~ 6.0V
V <sub>OUT</sub>	: 0.8V ~ 5.0V
I <sub>OUT</sub>	: 1A
I <sub>q</sub>	: 8μA@Power Save
	: 50μA@High Speed
PSRR	: 65dB @1kHz
Topr	: -40°C ~ 85°C
Package	: SOT-25, SOT-89-5, USP-6C



## ■ **XC6233** - 200mA High Speed LDO with Inrush Current Protection

- Inrush Current Protection

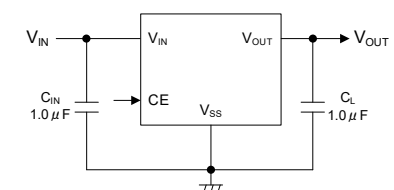
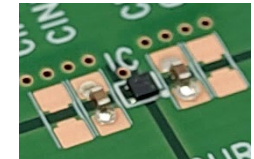
V <sub>IN</sub>	: 1.7V ~ 5.5V
V <sub>OUT</sub>	: 1.2V ~ 3.6V
I <sub>OUT</sub>	: 200mA
I <sub>q</sub>	: 45μA
PSRR	: 75dB @1kHz
Topr	: -40°C ~ 85°C
Package	: SOT-25, SSOT-24
	: USPQ-4B04, USP-4



## ■ **XC6223** - 300mA High Speed LDO with Inrush Current Protection

- High-speed transient response
- Inrush Current Protection

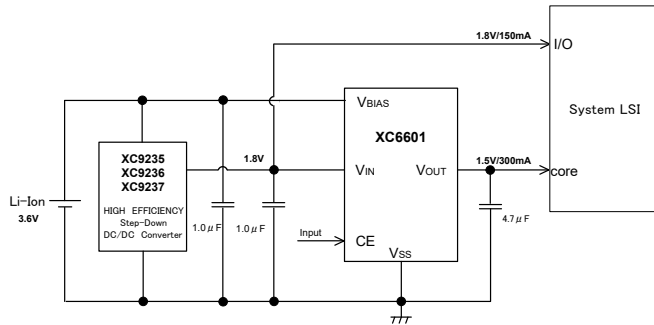
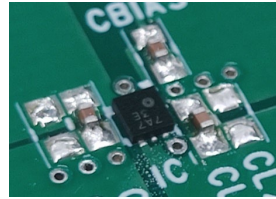
V <sub>IN</sub>	: 1.6V ~ 5.5V
V <sub>OUT</sub>	: 1.2V ~ 4.0V
I <sub>OUT</sub>	: 300mA
I <sub>q</sub>	: 100μA
PSRR	: 80dB @1kHz
Topr	: -40°C ~ 105°C
Package	: SOT-25, SOT-24, SOT-89-5
	: USPQ-4B03, USP-4



## XC6601 - 400mA Low Voltage Input LDO

- Low Input Voltage / Low Output Voltage
- Soft-start Function

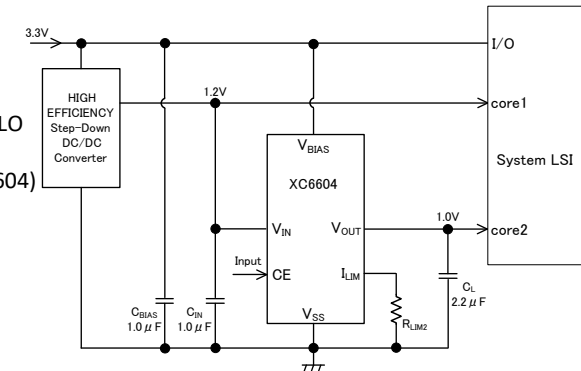
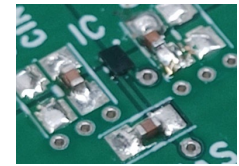
$V_{BIAS}$  : 2.5V ~ 6.0V  
 $V_{IN}$  : 1.0V ~ 3.0V  
 $V_{OUT}$  : 0.7V ~ 1.8V  
 $I_{OUT}$  : 400mA  
 $I_q$  : 25 $\mu$ A @  $V_{BIAS}$   
 PSRR : 60dB @1kHz  
 $T_{opr}$  : -40°C ~ 85°C  
 Package : SOT-25  
           SOT-89-5  
           USP-6C



## XC6602/03/04 - 1A 0.5V Ultra-Low Dropout LDO With Soft-start

- Low Input Voltage / Low Output Voltage
- Soft-start Adj (XC6603) / Current Limit Adj. (XC6604)

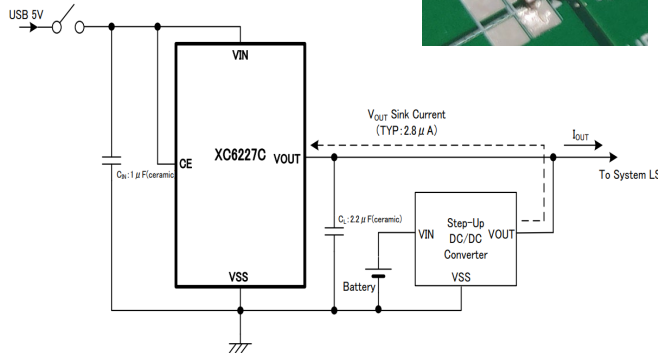
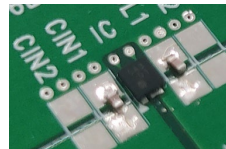
$V_{BIAS}$  : 2.5V ~ 6.0V  
 $V_{IN}$  : 0.5V ~ 3.0V  
 $V_{OUT}$  : 0.5V ~ 1.8V  
 $I_{OUT}$  : 1A  
 $I_q$  : 100 $\mu$ A @  $V_{BIAS}$   
 PSRR : 75dB @1kHz  
 Function : Thermal Shutdown, UVLO  
           Soft-start Adj. (XC6603)  
           Current Limit Adj. (XC6604)  
 $T_{opr}$  : -40°C ~ 85°C  
 Package : SOT-26W, USP-6C  
           SOT-89-5 (XC6602)  
           WLP-5-02 (XC6602)



## XC6227 - 700mA High Speed LDO with Reverse Current Protection

- Inrush Current Protection
- Reverse Current Protection, Suitable for backup or other  $V_{OUT}$  OR

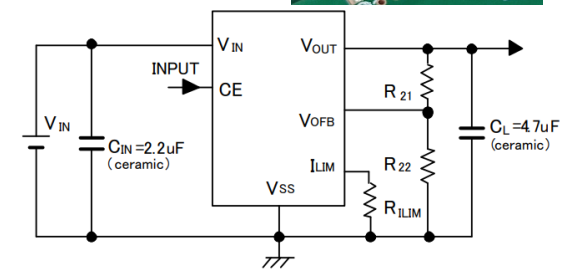
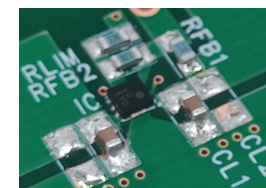
$V_{IN}$  : 1.7V ~ 6.0V  
 $V_{OUT}$  : 0.8V ~ 5.0V  
 $I_{OUT}$  : 700mA  
 $I_q$  : 100 $\mu$ A  
 PSRR : 65dB @1kHz  
 $T_{opr}$  : -40°C ~ 85°C  
 Package : SOT-25  
           SOT-89-5  
           USP-6C



## XC6230 - Adjustable 2A High Speed LDO with Multifunction

- Output Voltage Adj, High-speed transient response
- Current Limit Adj / Reverse Current Protection / Inrush Current Protection

$V_{IN}$  : 1.7V ~ 6.0V  
 $V_{OUT}$  : 1.2V ~ 5.0V  
 $I_{OUT}$  : 2A  
 $I_q$  : 45 $\mu$ A  
 PSRR : 70dB @1kHz  
 $T_{opr}$  : -40°C ~ 105°C  
 Package : SOP-8FD  
           USP-6C

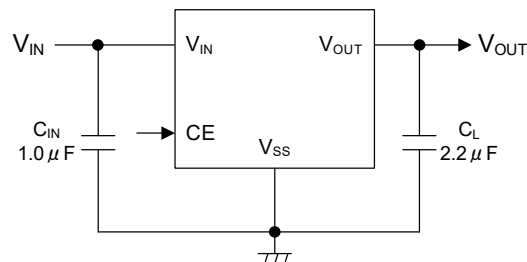
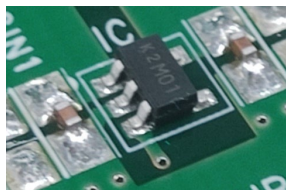


FEATURED

## ■ XC6505 - 10.5V 200mA High Speed Low Power LDO

- Input Voltage 10.5V
- Low Supply Current 5.5 $\mu$ A, High-speed transient response

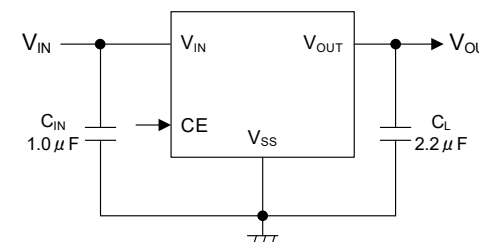
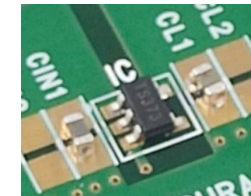
$V_{IN}$  : 1.7V ~ 10.5V  
 $V_{OUT}$  : 1.5V ~ 8.0V  
 $I_{OUT}$  : 200mA  
 $I_q$  : 5.5 $\mu$ A  
 PSRR : 60dB @1kHz  
 $T_{opr}$  : -40°C ~ 105°C  
 Package : SOT-25  
           SOT-89-5  
           USP-6C



## ■ XC6705 / XC6706 - 20V 200mA High Speed LDO

- Seamless GO function achieving both low  $I_q$  and fast response
- Ideal for Li 2 cells and 12V input

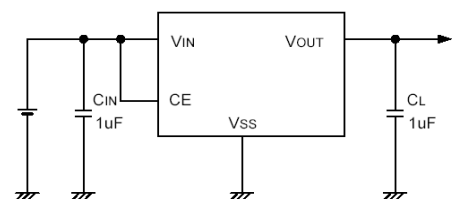
$V_{IN}$  : 3.5V ~ 20.0V  
 $V_{OUT}$  : 2.5V ~ 5.5V  
 $I_{OUT}$  : 200mA  
 $I_q$  : 1.2 $\mu$ A  
 PSRR : 50dB @1kHz  
 $T_{opr}$  : -40°C ~ 105°C  
 Package : SOT-25 (XC6705)  
           USP-4 (XC6705)  
           SOT-89 (XC6706)



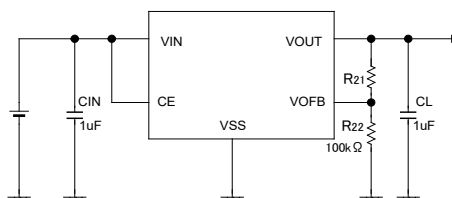
## ■ XC6216 - 28V 150mA LDO

- Input Voltage 28V
- Low Supply Current 5 $\mu$ A

$V_{IN}$  : 2.0V ~ 28.0V  
 $V_{OUT}$  : 1.8V ~ 12.0V  
 (外付け抵抗で2.0V~23.0V)  
 $I_{OUT}$  : 150mA  
 $I_q$  : 5 $\mu$ A  
 PSRR : 30dB @1kHz  
 $T_{opr}$  : -40°C ~ 85°C  
 Package : SOT-25, SOT-89-5  
           USP-6C, USP-6B06  
           SOT-23 (3pin LDO)  
           SOT-223 (3pin LDO)  
           TO-252 (3pin LDO)  
           SOT-89 (3pin LDO)



設定電圧固定品  
XC6216B

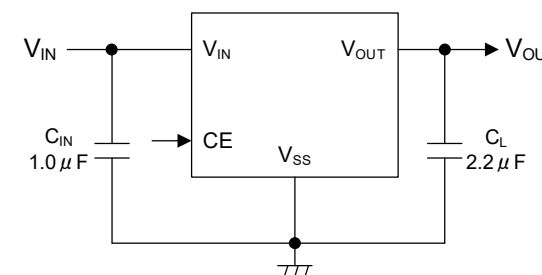
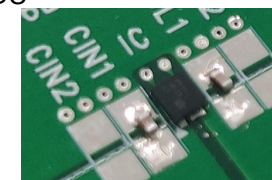


設定電圧外部設定品  
XC6216C

## ■ XC6702 - 36V 300mA Low Power, High Speed LDO

- Input Voltage 36V, Surge Voltage 46V(400ms or less)
- Low Supply Current / High Speed

$V_{IN}$  : 4.5V ~ 36.0V  
 $V_{OUT}$  : 1.8V ~ 18.0V  
 $I_{OUT}$  : 300mA  
 $I_q$  : 40 $\mu$ A  
 PSRR : 65dB @1kHz  
 $T_{opr}$  : -40°C ~ 105°C  
 Package : USP-6C  
           SOT-89-5  
           SOP-8FD



# Voltage Regulator : Low Iq type, Medium-speed type

## ▷ Low Voltage Regulators : Input Voltage 6V or less

	Product	Feature	V <sub>IN</sub> [V]	V <sub>OUT</sub> [V]	I <sub>OUT</sub> [mA]	I <sub>q</sub> [μA]	Ron [Ω]	PSRR @1kHz [dB]	Function			Topr max.	Package
									CE	Current Limit	Other		
FEATURED	XC6242	Charger IC for LTO Battery	1.5~6.0	2.60	150	0.8	4.50	35	Yes	ILIM	-	105°C	USPN-4 (0.90x1.2xh0.4mm)
FEATURED	XC6240	Iq=0.8μA, 150mA		2.63								85°C	SSOT-24, USPN-4 (0.90x1.2xh0.4mm) USP-6B06 (1.8x1.5xh0.33mm)
FEATURED	XC6241	Go function Iq=0.6μA, High Speed, 150mA	1.6~6.0	1.2~5.0	150	0.6	0.87	60	Yes	FB+ILIM	GO/CL Dischg	105°C	SSOT-24 (2.0x2.1xh1.1mm) USPQ-4B05 (1.0x1.0xh0.33mm)
	XC6506	Iq=0.8μA, 150mA	1.5~6.0	1.2~5.0	150	0.8	2.60	35	Yes	FB	-	105°C	USP-4 (0.9x1.2x0.4mm)
	XC6504	Cap Less, Iq=0.6μA, 150mA	1.4~6.0	1.1~5.0	150	0.6	2.13	30	Yes	FB+ILIM	Cap less/CL Dischg	85°C	SOT-25, SSOT-24 USPN-4B02, USPQ-4B04
	XC6217	Go function Iq=4.5μA, High Speed, 200mA	1.6~6.0	0.8~4.0	200	4.5	0.80	70	Yes	FB	GO/CL Dischg	85°C	SOT-25, SSOT-24 USP-4D, USPN-4
	XC6215P	Iq=0.8μA, 200mA	1.5~6.0	0.9~5.0	200	0.8	2.30	35	-	FB+ILIM	-	85°C	USP-3 (1.2x1.2xh0.6mm)
	XC6215B								Yes				SOT-25, SSOT-24 USP-4, USPN-4, USP-6B06
	XC6501P	Cap Less, High Speed, 200mA	1.4~6.0	1.2~5.0	200	13	1.20	50	-	FB	Cap less/CL Dischg	85°C	USP-3 (1.2x1.2xh0.6mm)
	XC6501A-D								Yes				SOT-25, SSOT-24 USP-4, USPN-4, WLP-4-01
	XC6206	Iq=1μA, 250mA	1.8~6.0	1.2~5.0	250	1	1.75	35	-	FB+ILIM	-	85°C	USP-6B (1.8x2.0xh0.6mm) SOT-89, SOT-23
	XC6503P	Cap Less, High Speed, 500mA	1.7~6.0	1.2~5.0	500	15	0.47	55	-	FB+ILIM	Cap less/TSD/CL Dischg	85°C	SOT-89 (4.5x4.0xh1.6mm)
	XC6503A-D								Yes				SOT-89-5, SOT-25 USP-4 (1.2x1.6xh0.6mm)
	XC6220	Go function Iq=8μA, High Speed 1A	1.6~6.0	0.8~5.0	1000	8	0.18	50	Yes	FB+ILIM	GO/Inrush/TSD/CL Dischg	85°C	USP-6C (1.8x2.0xh0.6mm) SOT-25, SOT-89-5

## ▷ Middle Voltage Regulators : Input Voltage 20V or less

	Product	Feature	V <sub>IN</sub> [V]	V <sub>OUT</sub> [V]	I <sub>OUT</sub> [mA]	I <sub>q</sub> [μA]	Ron [Ω]	PSRR @1kHz [dB]	Function			Topr max.	Package
									CE	Current Limit	Other		
FEATURED	XC6706	Seamless GO	3.5~20.0	2.5~5.5	200	1.2	0.45	50	-	FB	GO/SoftStart/TSD	105°C	SOT-89 (4.5x4.0xh1.6mm)
FEATURED	XC6705	Iq=1.2μA, High Speed 20V, 200mA							GO/SoftStart/TSD /CLDischarge		USP-4 (1.2x1.6xh0.6mm) SOT-25 (2.9x2.8xh1.3mm)		
	XC6505	Iq=5.5μA 10.5V, 200mA	1.7~10.5	1.5~8.0	200	5.5	1.10	60	Yes	FB+ILIM	TSD/CL Dischg	105°C	USP-6C (1.8x2.0xh0.6mm) SOT-89-5, SOT-25
	XC6201	Iq=2μA 10V, 200mA	1.8~10.0	1.3~6.0	200	2	2.00	35	-	ILIM	-	85°C	USP-6B (1.8x2.0xh0.6mm) SOT-89, SOT-25

## ▷ High Voltage Regulators : Input Voltage 36V or less

	Product	Feature	V <sub>IN</sub> [V]	V <sub>OUT</sub> [V]	I <sub>OUT</sub> [mA]	I <sub>q</sub> [μA]	Ron [Ω]	PSRR @1kHz [dB]	Function			Topr max.	Package
									CE	Current Limit	Other		
	XC6216B	28V, 150mA FB Type (XC6216C)	2.0~28.0	1.8~12.0	150	5	6.50	30	Yes	FB+ILIM	TSD	85°C	USP-6C, SOT-25 USP-6B06, SOT-89-5
	XC6216C			2.0~23.0									USP-6C (1.8x2.0xh0.6mm) SOT-89-5, SOT-25
	XC6216D			1.8~12.0									TO-252, SOT-89, SOT-223
	XC6408	28V, 150mA RESET	2.0~28.0	2.0~18.0	150	8	3.50	40	-	FB+ILIM	TSD /RESET	85°C	USP-6C (1.8x2.0xh0.6mm) SOT-89-5, SOT-25

# Voltage Regulator : High-speed type

## ▷ Low Voltage Regulators : Input Voltage 6V or less

Product	Feature	V <sub>IN</sub> [V]	V <sub>OUT</sub> [V]	I <sub>OUT</sub> [mA]	I <sub>q</sub> [μA]	Ron [Ω]	PSRR @1kHz [dB]	Function			Topr max.	Package
								CE	Current Limit	Other		
<b>FEATURED</b> XC6241	GO function I <sub>q</sub> =0.6μA, High Speed, 150mA	1.6~6.0	1.2~5.0	150	0.6	0.87	60	Yes	FB+HLIM	GO/CL Dischg	105°C	SSOT-24 (2.0x2.1xh1.1mm) USPQ-4B05 (1.0x1.0xh0.33mm)
XC6233	Inrush Protection, High Speed, 200mA	1.7~5.5	1.2~3.6	200	45	1.20	75	Yes	FB+HLIM	Inrush/CL Dischg	85°C	SOT-25, SSOT-24 USP-4, USPQ-4B04
XC6221	High Speed, 200mA	1.6~6.0	0.8~5.0	200	25	0.80	70	Yes	FB	CL Dischg	85°C	SOT-25, SSOT-24 USP-4, USPN-4
XC6217	GO function I <sub>q</sub> =4.5μA, High Speed, 200mA	1.6~6.0	0.8~4.0	200	4.5	0.80	70	Yes	FB	GO/CL Dischg	85°C	SOT-25, SSOT-24 USP-4D, USPN-4
XC6415	2ch LDO, 200mA x 2ch	1.5~6.0	0.8~5.0	200 x 2ch	28/ch	1.00	65	Yes	FB	CL Dischg	85°C	USP-6C (1.8x2.0xh0.6mm) SOT-26, USPN-6
XC6229	High Speed, 300mA Inrush Protection	1.6~5.5	1.2~4.0	300	100	0.53	80	Yes	FB+HLIM	Inrush/TSD/CL Dischg	85°C	LGA-4B01 (0.75x0.75xh0.3mm)
Inrush/CL Dischg										105°C	USPQ-4B04 (1.0x1.0xh0.6mm)	
Inrush/TSD/CL Dischg										105°C	SOT-25, SSOT-24, SOT-89-5 USP-4, USPQ-4B03	
XC6219	High Speed, 300mA	2.0~6.0	0.9~5.0	300	25	1.60	70	Yes	FB+HLIM	-	85°C	USP-6B (1.8x2.0xh0.6mm) SOT-25, SOT-89-5
XC6227	Reverse Current Protection, High Speed, 700mA	1.7~6.0	0.8~5.0	700	100	0.40	65	Yes	FB	Reverse/TSD	85°C	USP-6C (1.8x2.0xh0.6mm) SOT-89-5, SOT-25
XC6222	High Speed, 700mA	1.7~6.0	0.8~5.0	700	100	0.40	65	Yes	FB	Reverse/TSD/CL Dischg	85°C	USP-6C (1.8x2.0xh0.6mm) SOT-89-5, SOT-25
XC6220	GO function I <sub>q</sub> =8μA, High Speed 1A	1.6~6.0	0.8~5.0	1000	8	0.18	50	Yes	FB+HLIM	GO/Inrush/TSD/CL Dischg	85°C	USP-6C (1.8x2.0xh0.6mm) SOT-25, SOT-89-5
XC6230	High Speed, 2A FB Type	1.7~6.0	1.2~5.0	2000	45	0.18	70	Yes	FB+HLIM	Reverse/Inrush/TSD/HLIM Adj/CL Dischg	105°C	USP-6C (1.8x2.0xh0.6mm) SOP-8FD(6.0 x 4.9 xh1.55mm)

## ▷ Middle Voltage Regulators : Input Voltage 20V or less

Product	Feature	V <sub>IN</sub> [V]	V <sub>OUT</sub> [V]	I <sub>OUT</sub> [mA]	I <sub>q</sub> [μA]	Ron [Ω]	PSRR @1kHz [dB]	Function			Topr max.	Package
								CE	Current Limit	Other		
<b>FEATURED</b> XC6706	Seamless GO I <sub>q</sub> =1.2μA, High Speed	3.5~20.0	2.5~5.5	200	1.2	0.45	50	-	FB	GO/SoftStart/TSD	105°C	SOT-89 (4.5x4.0xh1.6mm)
<b>FEATURED</b> XC6705	20V, 200mA	1.7~10.5	1.5~8.0	200	5.5	1.10	60	Yes		GO/SoftStart/TSD/CL Discharge	105°C	USP-4 (1.2x1.6xh0.6mm) SOT-25 (2.9x2.8xh1.3mm)
XC6505	I <sub>q</sub> =5.5μA 10.5V, 200mA							Yes	FB+HLIM	TSD/CL Dischg	105°C	USP-6C (1.8x2.0xh0.6mm) SOT-89-5, SOT-25
XC6209	10V, 300mA High Speed	2.0~10.0	0.9~6.0	300	25	1.60	80	Yes	FB+HLIM	-	85°C	USP-6B (1.8x2.0xh0.6mm) SOT-89-5, SOT-25
XC6231	10V, 500mA High Speed	2.0~10.0	0.9~5.5	500	35	1.60	65	-	FB+HLIM	-	85°C	SOT-89-5 (4.5x4.6xh1.6mm)

## ▷ High Voltage Regulators : Input Voltage 36V or less

Product	Feature	V <sub>IN</sub> [V]	V <sub>OUT</sub> [V]	I <sub>OUT</sub> [mA]	I <sub>q</sub> [μA]	Ron [Ω]	PSRR @1kHz [dB]	Function			Topr max.	Package
								CE	Current Limit	Other		
XC6701A	28V, 150mA High Speed	2.0~28.0	1.8~18.0	150	50	6.50	50	Yes	FB+HLIM	TSD	105°C	USP-6C (1.8x2.0xh0.6mm) SOT-89-5, SOT-25
XC6701D								-			85°C	TO-252, SOT-223, SOT-89
XC6702	36V (46V/400ms) High Speed, Low I <sub>q</sub>	4.5~36.0	1.8~18.0	300	40	3.50	65	Yes	FB	SoftStart/TSD	105°C	USP-6C (1.8x2.0xh0.6mm) SOT-89-5, SOP-8FD

## ▷ Low Input Voltage ( $V_{in}=0.5V\sim 3.0V$ )

Product	Feature	$V_{in}$ [V]	$V_{out}$ [V]	$I_{out}$ [mA]	$I_q$ [ $\mu A$ ]	$R_{on}$ [ $\Omega$ ]	PSRR @1kHz [dB]	Function			Topr max.	Package
								CE	Current Limit	Other		
XC6601	Low Voltage input, $V_{bias}=2.5\sim 6V$ , 400mA	1.0~3.0	0.7~1.8	400	25	0.34	60	Yes	FB+I LIM	UVLO/TSD/SoftStart/CL Dischg	85°C	USP-6C (1.8x2.0x0.6mm) SOT-89-5 ,SOT-25
XC6604	Low Voltage input, 1A $V_{bias}=2.5\sim 6V$ Current Limit adj. (XC6604) SoftStart adj. (XC6603)	0.5~3.0	0.5~1.8	1000	100	0.15	75	Yes	FB	UVLO/TSD/SoftStart/CL Dischg I LIM Adj (XC6604) SoftStart Adj (XC6603)	85°C	USP-6C (1.8x2.0x0.6mm) SOT-26W (2.9x2.8x1.3mm)
XC6603												
XC6602												

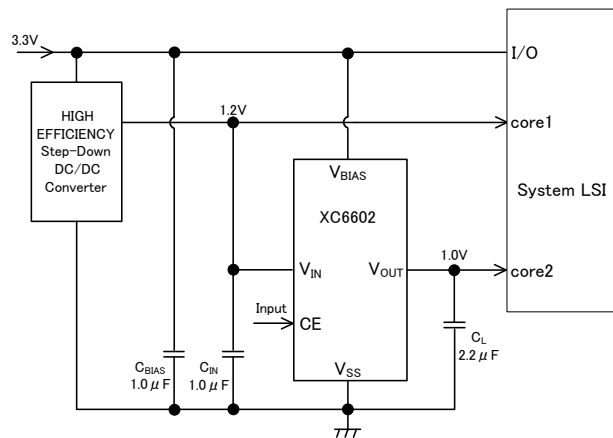
## ▷ Negative Voltage Regulator

Product	Feature	$V_{in}$ [V]	$V_{out}$ [V]	$I_{out}$ [mA]	$I_q$ [ $\mu A$ ]	$R_{on}$ [ $\Omega$ ]	PSRR @1kHz [dB]	Function			Topr max.	Package
								CE	Current Limit	Other		
XC62KN	-10V, 100mA	-10.0~-2.1	-6.0~-2.1	100	3	3.80	40	-	I LIM	-	85°C	USP-6B (1.8x2.0x0.6mm) SOT-89, SOT-23
XC6902	-16V, 200mA High Speed	-16.0~-2.4	-12.0~-0.9	200	100	3.90	45	-	FB	TSD/SoftStart	85°C	USP-6C (1.8x2.0x0.6mm) SOT-89 ,SOT-23
XC6901	-12.4V, 200mA High Speed	-12.4~-2.4	-12.0~-0.9	200	100	2.50	45	Yes	FB	TSD/SoftStart/CL Dischg	85°C	USP-6C (1.8x2.0x0.6mm) SOT-89-5 ,SOT-25

## ▷ Voltage Regulator with Bridge Diode for Wireless Power Receiver

Product	Feature	$V_{in}$ [V]	$V_{out}$ [V]	$I_{out}$ [mA]	$I_q$ [ $\mu A$ ]	$R_{on}$ [ $\Omega$ ]	PSRR @1kHz [dB]	Function			Topr max.	Package
								CE	Current Limit	Other		
XC6M14	For Wireless Power Receiver Built-in Bridge Diode	2.0~26.0	2.0~12.0	150	5	6.50	30	Yes	FB+I LIM	TSD	85°C	USP-8B10 (2.6x2.9x0.33mm)

### Low Input Voltage Regulator



### Voltage Regulator with Bridge Diode for Wireless Power Receiver

