

# Compact and Space-Saving Power Supply Solutions

## World's smallest product line of area-saving solutions

**XC9290/XC9291**

**NEW**

World's smallest 6.0V 600mA step-down DC/DC



Actual Size

**XCL239/XCL240**

**NEW**

1A Built-in inductor Micro DC/DC



Actual Size

**XC9289**

**NEW**

1.5A HiSAT-COT 1.5A Step-down DC/DC



Actual Size

**XC9702**

**NEW**

60V 300mA Step-down DC/DC



Actual Size

**XC8110/XC8111**

**FEATURED**

Ideal Diode Load Switch 0.5A/1A



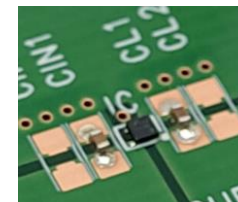
Actual Size

**XC6241**

**FEATURED**

**, XC6135/XC6136**

150mA LDO with GO function, Ultra-low Iq RESET



Actual Size

## List of Compact and Space-saving Power Supply ICs

	Product	Features		V <sub>IN</sub> (V)	V <sub>OUT</sub> (V)	I <sub>OUT</sub> (mA)	Package	Size
LDO	<b>XC6241</b>	High-speed, Iq=0.6µA, GO	<b>FEATURED</b>	1.6 ~ 6.0	1.5 ~ 5.0	150	USPQ-4B05	1.0 x 1.0 x h 0.33mm
	<b>XC6228</b>	High-speed, PSRR=75dB, 300mA		1.6 ~ 5.5	1.2 ~ 4.0	300	USPQ-4B04	1.0 x 1.0 x h 0.6mm
	<b>XC6504</b>	Cap. Less, Iq=0.6µA		1.4 ~ 6.0	1.1 ~ 5.0	150	USPN-4B02	0.75 x 0.95 x h 0.40mm
Step-up DC/DC	<b>XCL104/XCL105</b>	Built-in inductor, F-PWM, PWM/PFM	<b>FEATURED</b>	0.65 ~ 6.0	1.8 ~ 5.5	710 @3.3V→5V	DFN3030-10B	3.0 x 3.0 x h 1.7mm
	<b>XCL102/XCL103</b>	Built-in inductor, F-PWM, PWM/PFM		0.65 ~ 6.0	2.2 ~ 5.5	450 @3.3V→5V	CL-2025-02	2.0 x 2.5 x h 1.04mm
Step-down DC/DC	<b>XCL243/XCL244</b>	Built-in inductor, HiSAT-COT, 700mA, h=0.75mm max	<b>NEW</b>	2.5 ~ 5.5	0.8 ~ 3.6	700	USP-8B04	2.25 x 1.5 x h 0.75mm
	<b>XCL239/XCL240</b>	Built-in inductor, HiSAT-COT, 1A	<b>NEW</b>	2.5 ~ 5.5	0.8 ~ 3.6	1000	CL-2025-02	2.0 x 2.5 x h 1.04mm
	<b>XCL233</b>	Iq=200nA, Step-down DC/DC, VSET	<b>NEW</b>	1.8 ~ 6.0	0.5 ~ 3.6	150	CL-2025-03	2.0 x 2.5 x h 1.04mm
	<b>XC9290/XC9291</b>	HiSAT-COT, 600mA, World's smallest mounting area 3.15mm <sup>2</sup>	<b>NEW</b>	2.5 ~ 6.0	0.7 ~ 3.6	600	WLP-5-08	0.96 x 0.88 x h 0.33 mm
	<b>XC9289</b>	HiSAT-COT, 1.5A, F-PWM, PWM/PFM selectable	<b>NEW</b>	2.5 ~ 5.5	0.8 ~ 3.6	1500	LGA-8B01	1.2 x 1.4 x h 0.3mm
	<b>XC9702</b>	60V, MODE: F-PWM, PWM/PFM, 1MHz, 300mA, Low Iq: 12µA	<b>NEW</b>	4.5 ~ 60.0	2.5 ~ 12.0	300	USP-10B	2.6 x 2.9 x h 0.6mm
RESET IC	<b>XC6135/XC6136</b>	Ultra-low Iq: 88nA Voltage Detector		1.1 ~ 6.0	1.2 ~ 5.0	-	USPQ-4B05	1.0 x 1.0 x h 0.33mm
Charger IC	<b>XC6810</b>	For 1 cell Li-ion, Multi-function Charger IC	<b>FEATURED</b>	3.5 ~ 28	3.8 ~ 4.4	1 ~ 25	WLP-12-01	1.17 x 1.57 x h 0.33mm
Load SW	<b>XC8110/XC8111</b>	Ideal diode load SW, VF=20mV, IEC 62368-1 certified	<b>FEATURED</b>	1.5 ~ 6.0	-	1000	WLP-4-02	0.82 x 0.82 x h 0.5mm